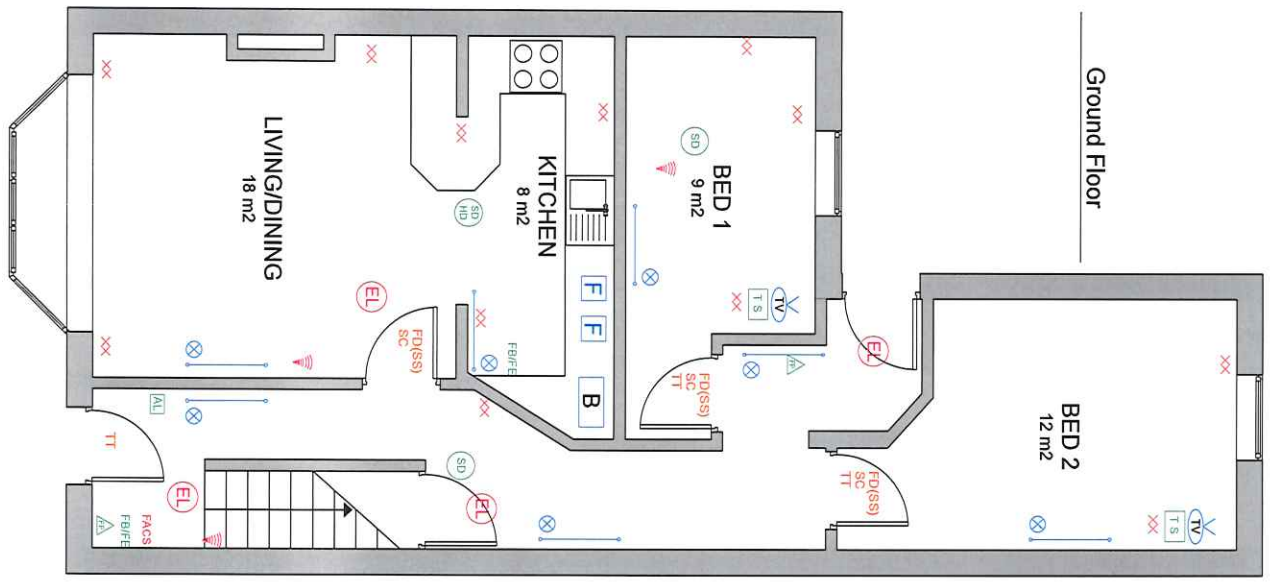


110 Broomgrove Road - 9 Bed.



KEY

- RADIATOR
- THERMOSTATIC VALVE
- TOWEL RAIL
- SINGLE SOCKET
- DOUBLE SOCKET
- SMOKE DETECTOR (MAINS)
- OPTICAL SMOKE DETECTOR (MAINS)
- SMOKE ALARM LOCATOR
- HEAT DETECTOR
- SMOKE & HEAT DETECTOR
- EMERGENCY LIGHTING
- ALARM SOUNDER
- FIRE BLANKET/EXTINGUISHER
- FIRE BREAK GLASS POINT
- FIRE ALARM CONTROL SWITCH/PANEL
- SMOKE VENT
- EXTRACTOR FAN
- INTERNET/TELEPHONE SOCKET
- TV AERIAL SOCKET
- INTERNET DATA CONNECTION HUB
- FIRE DOOR (COLD SMOKE SEALS)
- PERKO CLOSER
- SELF CLOSER ARM
- THUMB TURN LOCK
- HUMIDISTAT FAN
- SECURITY ALARM SYSTEM/PANEL
- THERMOSTAT
- VELUX WINDOW
- FRIDGE/FREEZER
- BOILER
- GAS METER
- ELECTRIC METER

EVERTIM TECHNICAL CONSULTANTS
 110 Broomgrove Road Sheffield, S10 1GD
 www.evertim.co.uk
 E: info@evertim.co.uk T: 07507 290884/07950250722

Project: **HMO Layouts**
 Client: **P A Properties**
 Address: **110 Broomgrove Road Sheffield**

Sheet: **Presentation**
 Title: **The Ground Floor Plan**
 Scale: **N/A**

Date: **19/09/2013**
 Drawing no: **BR0101/H0001/G**
 Revision:
 Drawn by: **ME**

Notes:

PA Properties

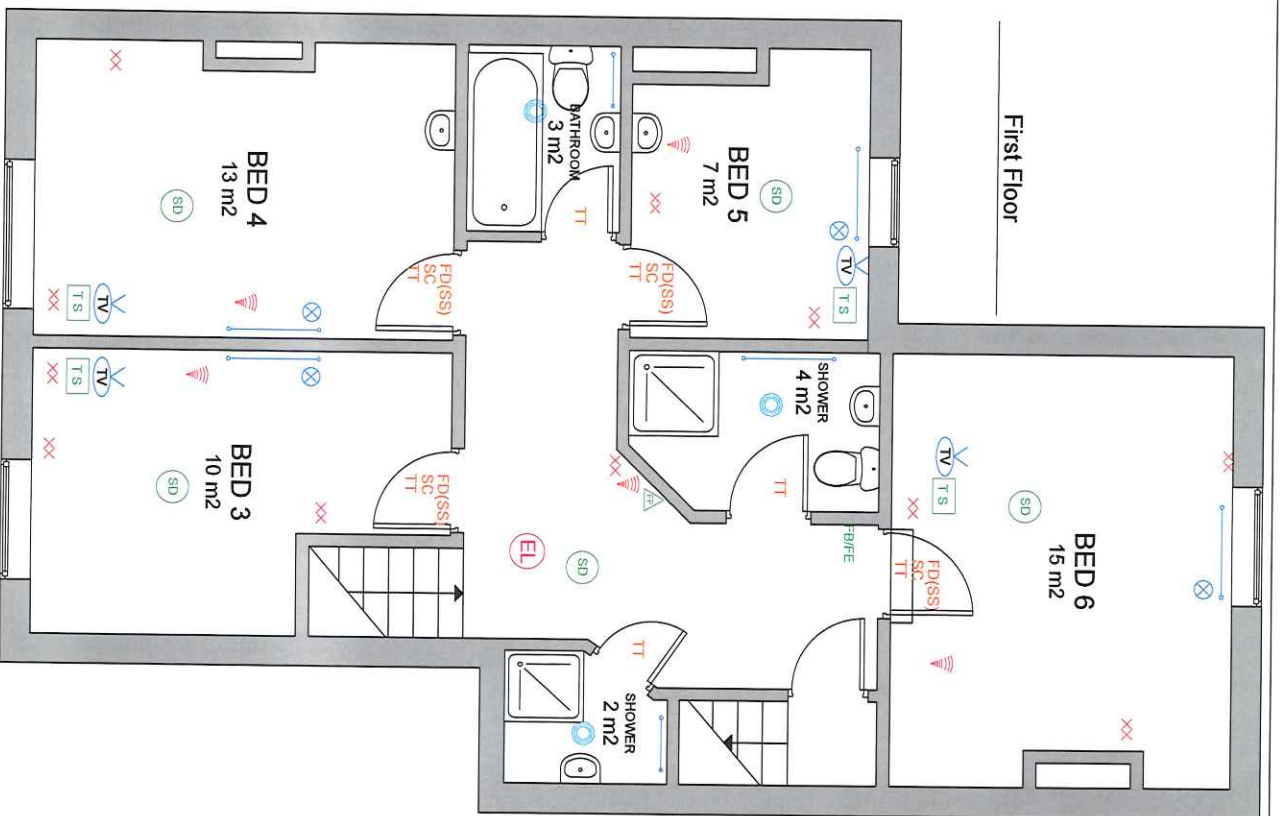
The Old Bank
 23 Cornhill
 Sheffield S10 1GD

Tel: 0114 267 0155 or 0114 266 4349
 Fax: 0114 268 4364

Quality Student properties and professional lettings in Sheffield

NLA NATIONAL LANDLORD ASSOCIATION

110 Broomgrove Road - 9 Bed.



First Floor

KEY

- | | | | |
|--|---------------------------------|--|------------------------------|
| | RADIATOR | | EXTRACTOR FAN |
| | THERMOSTATIC VALVE | | INTERNET/TELEPHONE SOCKET |
| | TOWEL RAIL | | TV AERIAL SOCKET |
| | SINGLE SOCKET | | INTERNET DATA CONNECTION HUB |
| | DOUBLE SOCKET | | FIRE DOOR (COLD SMOKE SEALS) |
| | SMOKE DETECTOR (MAINS) | | PERKO CLOSER |
| | OPTICAL SMOKE DETECTOR (MAINS) | | SELF CLOSER ARM |
| | SMOKE ALARM LOCATOR | | THUMB TURN LOCK |
| | HEAT DETECTOR | | HUMIDISTAT FAN |
| | SMOKE & HEAT DETECTOR | | SECURITY ALARM SYSTEM/PANEL |
| | EMERGENCY LIGHTING | | THERMOSTAT |
| | ALARM SOUNDER | | VELUX WINDOW |
| | FIRE BLANKET/EXTINGUISHER | | FRIDGE/FREEZER |
| | FIRE BREAK GLASS POINT | | BOILER |
| | FIRE ALARM CONTROL SWITCH/PANEL | | GAS METER |
| | SMOKE VENT | | ELECTRIC METER |

Eminent M
ARCHITECTURAL
TECHNICAL CONSULTANCY

STUDIO 23, 20a-22 Burton Road Sheffield, S3 8BX.
www.eminentm.co.uk
info@eminentm.co.uk T: 07907290884/07950250722

Project: **HMO Layouts**

Client: **P A Properties**
Address: **110 Broomgrove Road**
Sheffield

Stage: **Presentation**

The: **First Floor Plan**

Scale: **N/A**

Date: **19/09/2013**

Drawn by: **ME**

Revision: **BRO101/H0001/F**

Notes:

PA Properties

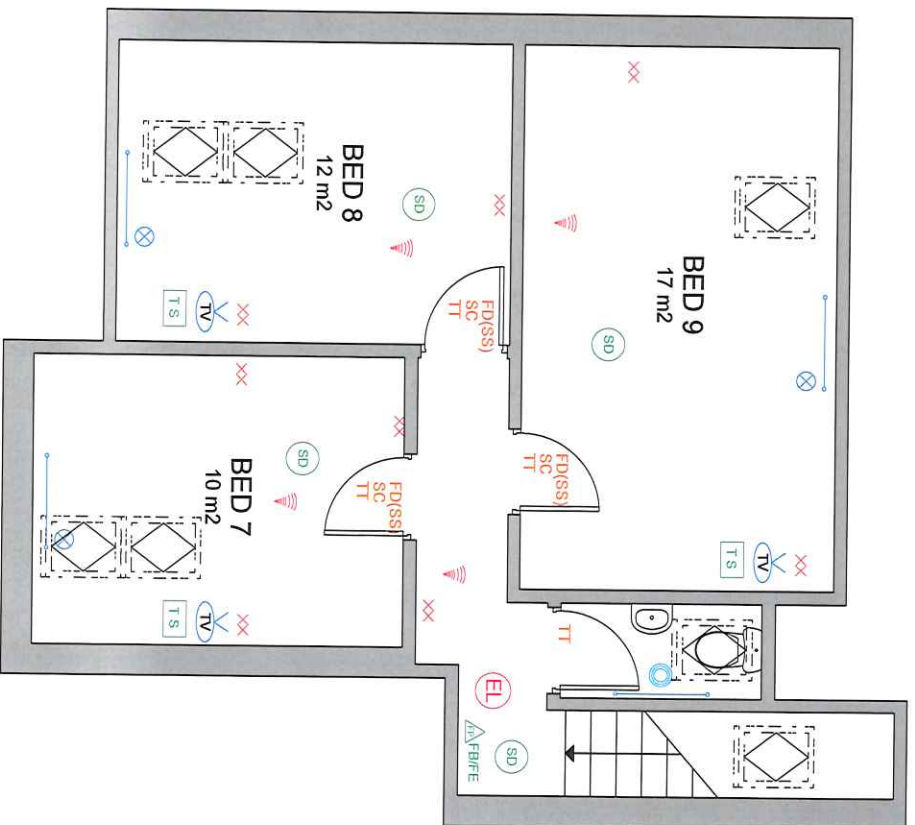
The Old Bank
23 Comptonside
Sheffield S10 1GD

Tel: 0114 267 0155 or 0114 266 4349
Fax: 0114 268 4364

Quality Student properties and professional lettings in Sheffield

NIA
NATIONAL
INDUSTRIAL
ASSOCIATION

110 Broomgrove Road - 9 Bed.



Second Floor

KEY

- | | | | |
|--|---------------------------------|--|------------------------------|
| | RADIATOR | | EXTRACTOR FAN |
| | THERMOSTATIC VALVE | | TV AERIAL SOCKET |
| | TOWEL RAIL | | INTERNET DATA CONNECTION HUB |
| | SINGLE SOCKET | | FIRE DOOR (COLD SMOKE SEALS) |
| | DOUBLE SOCKET | | PERKO CLOSER |
| | SMOKE DETECTOR (MAINS) | | SELF CLOSER ARM |
| | OPTICAL SMOKE DETECTOR (MAINS) | | THUMB TURN LOCK |
| | SMOKE ALARM LOCATOR | | HUMIDISTAT FAN |
| | HEAT DETECTOR | | SECURITY ALARM SYSTEM/PANEL |
| | SMOKE & HEAT DETECTOR | | THERMOSTAT |
| | EMERGENCY LIGHTING | | VELUX WINDOW |
| | ALARM SOUNDER | | FRIDGE/FREEZER |
| | FIRE BLANKET/EXTINGUISHER | | BOILER |
| | FIRE BREAK GLASS POINT | | GAS METER |
| | FIRE ALARM CONTROL SWITCH/PANEL | | ELECTRIC METER |
| | SMOKE VENT | | |