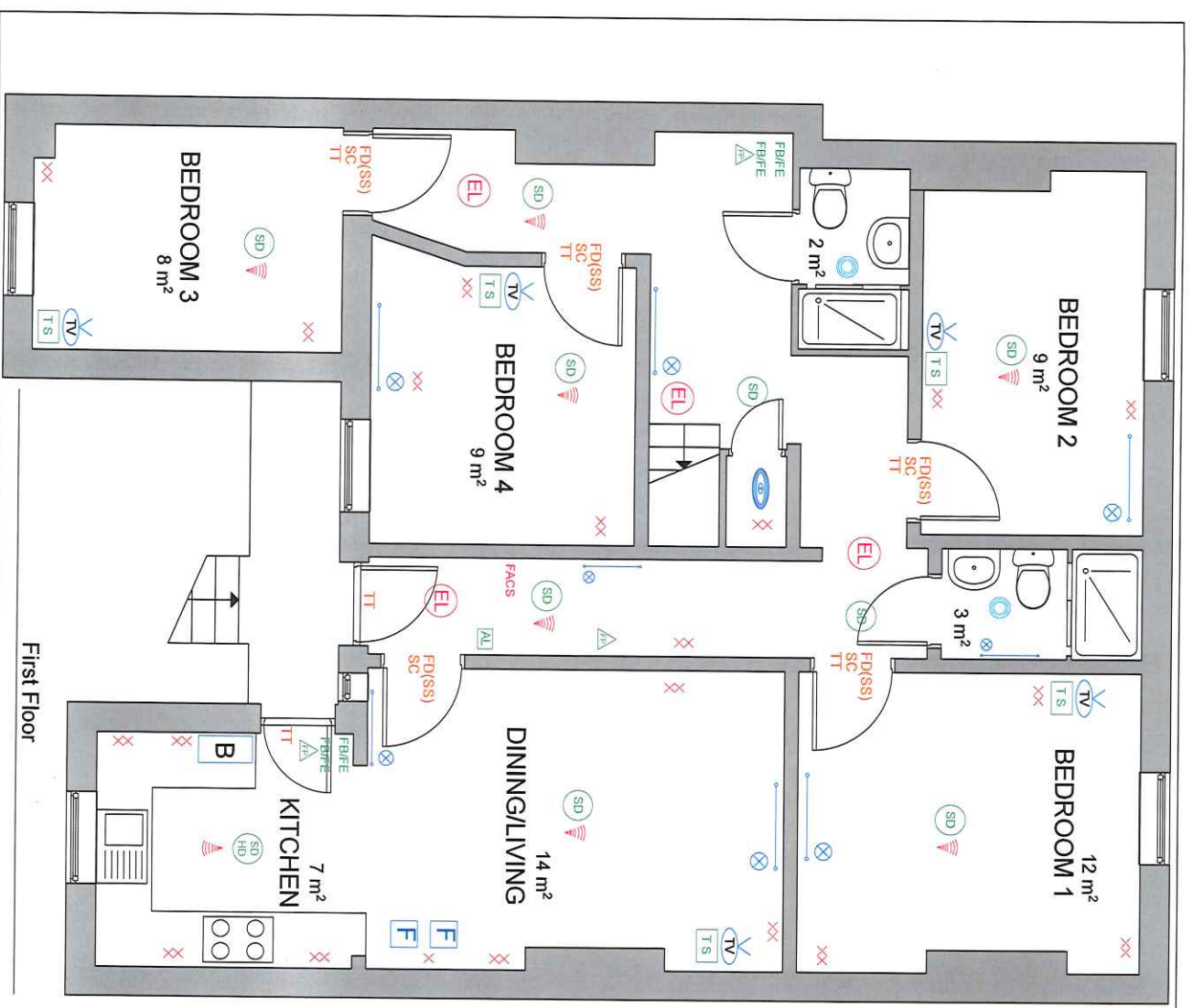


325-327 Glossop Road - 5 Bed.



KEY

- RADIATOR
- THERMOSTATIC VALVE
- TOWEL RAIL
- SINGLE SOCKET
- DOUBLE SOCKET
- SMOKE DETECTOR (MAINS)
- OPTICAL SMOKE DETECTOR (MAINS)
- SMOKE ALARM LOCATOR
- HEAT DETECTOR
- SMOKE & HEAT DETECTOR
- EMERGENCY LIGHTING
- ALARM SOUNDER
- FIRE BLANKET/EXTINGUISHER
- FIRE BREAK GLASS POINT
- FIRE ALARM CONTROL SWITCH/PANEL
- SMOKE VENT
- EXTRACTOR FAN
- INTERNET/TELEPHONE SOCKET
- TV AERIAL SOCKET
- INTERNET DATA CONNECTION HUB
- FIRE DOOR (COLD SMOKE SEALS)
- PERKO CLOSER
- SELF CLOSER ARM
- THUMB TURN LOCK
- HUMIDISTAT FAN
- SECURITY ALARM SYSTEM/PANEL
- THERMOSTAT
- VELUX WINDOW
- FRIDGE/FREEZER
- BOILER
- GAS METER
- ELECTRIC METER

ELECTRIC M
INSTALLATION
 HONORATA CONSULTING
 A member of the M&P Group

STUDIO 23, 20a-23 Bures Road Sheffield, S3 8BX
 www.electrim.co.uk
 E: hello@electrim.co.uk T: 0790729684/0795020722

Project: HMO Licensing Layouts
 Client: P A Properties

Stage: Presentation
 Title: First Floor Plans
 Scale: N/A

Date: 16/09/2013
 Drawing no: GLOS101/H0001/F
 Revision: Drawn By: G M

Notes:

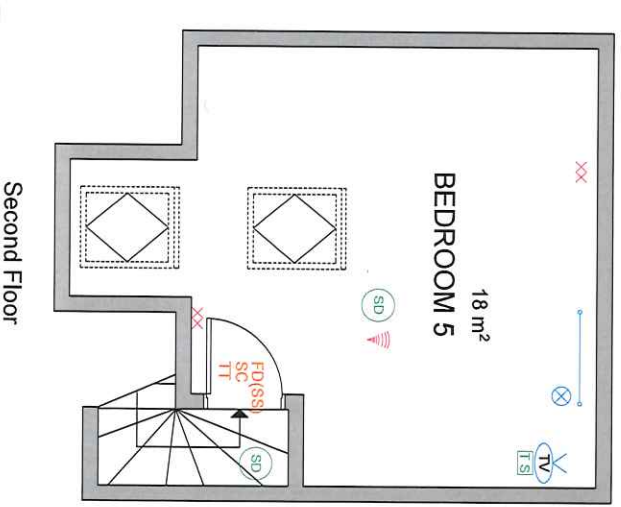
PA Properties

The Old Bank
 23 Cornmarket
 Sheffield S10 1GD
 Quality Student properties and professional lettings in Sheffield

Tel: 0114 267 0155 or 0114 266 4349
 Fax: 0114 268 4364



325-327 Glossop Road - 5 Bed.



Second Floor

KEY

- RADIATOR
- THERMOSTATIC VALVE
- TOWEL RAIL
- SINGLE SOCKET
- DOUBLE SOCKET
- SMOKE DETECTOR (MAINS)
- OPTICAL SMOKE DETECTOR (MAINS)
- SMOKE ALARM LOCATOR
- HEAT DETECTOR
- SMOKE & HEAT DETECTOR
- EMERGENCY LIGHTING
- ALARM SOUNDER
- FIRE BLANKET/EXTINGUISHER
- FIRE BREAK GLASS POINT
- FIRE ALARM CONTROL SWITCH/PANEL
- SMOKE VENT
- EXTRACTOR FAN
- INTERNET/TELEPHONE SOCKET
- TV AERIAL SOCKET
- INTERNET DATA CONNECTION HUB
- FIRE DOOR (COLD SMOKE SEALS)
- PERKO CLOSER
- SELF-CLOSER ARM
- THUMB TURN LOCK
- HUMIDISTAT FAN
- SECURITY ALARM SYSTEM/PANEL
- THERMOSTAT
- VELUX WINDOW
- FRIDGE/FREEZER
- BOILER
- GAS METER
- ELECTRIC METER

E.M.C.
ENVIRONMENTAL
MEASUREMENTS
& CONSULTANCY

STUDIO 23, 20a-22 Burton Road Sheffield, S3 8BX.
E: info@emcsh.co.uk
T: 01902290664/01902020722

Project: HMO Licensing Layouts
Client: P A Properties
Address: 325-327 Glossop Road Sheffield

Stage: Presentation
Title: Second Floor Plans
Scale: N/A

Date: 16/09/2013
Drawing no.: GLOS101/H0001/S
Revision:
Drawn by: G M

Notes:

PA Properties
The Old Bank
23 Cornerstone
Sheffield S10 1GB
Quality Student properties and professional lettings in Sheffield

Tel: 0114 267 0155 or 0114 266 4349
Fax: 0114 268 4364

NIA
NATIONAL
INDEPENDENT
ASSESSORS